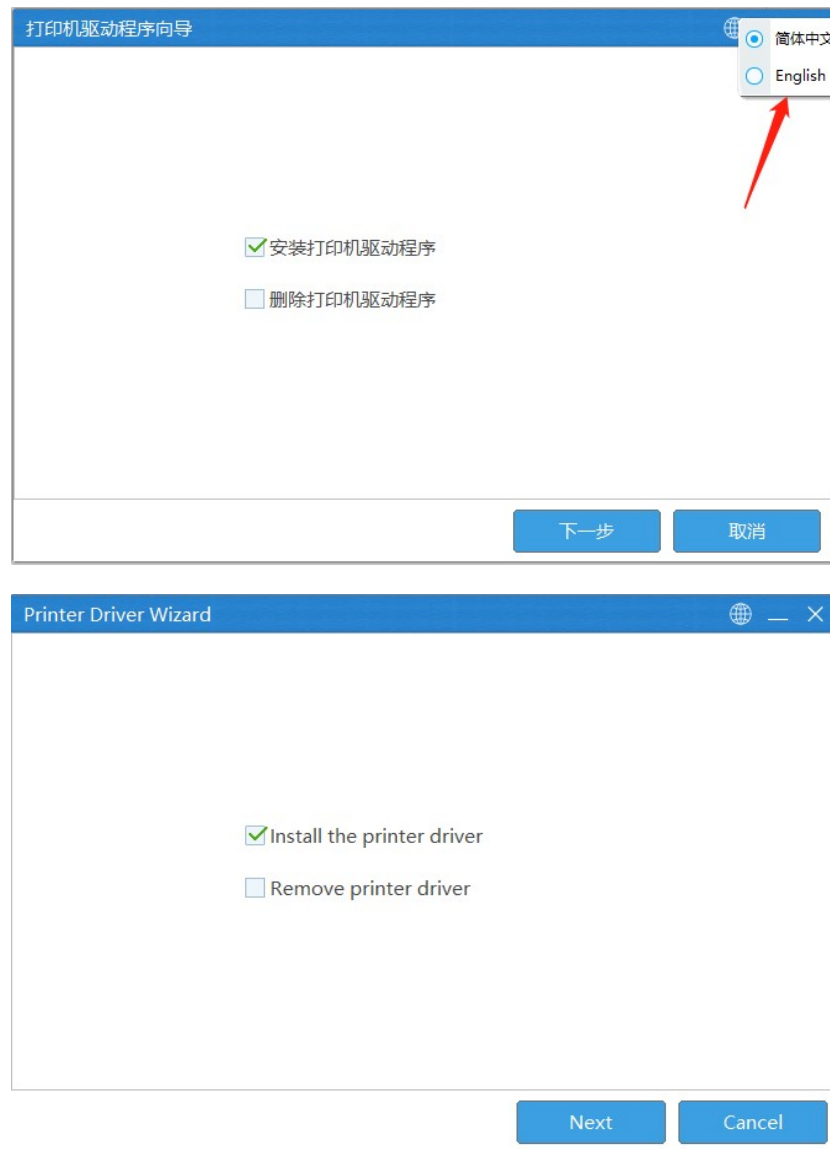


# PeriPage A40 Windows Driver Installation

## Install Windows PC Driver

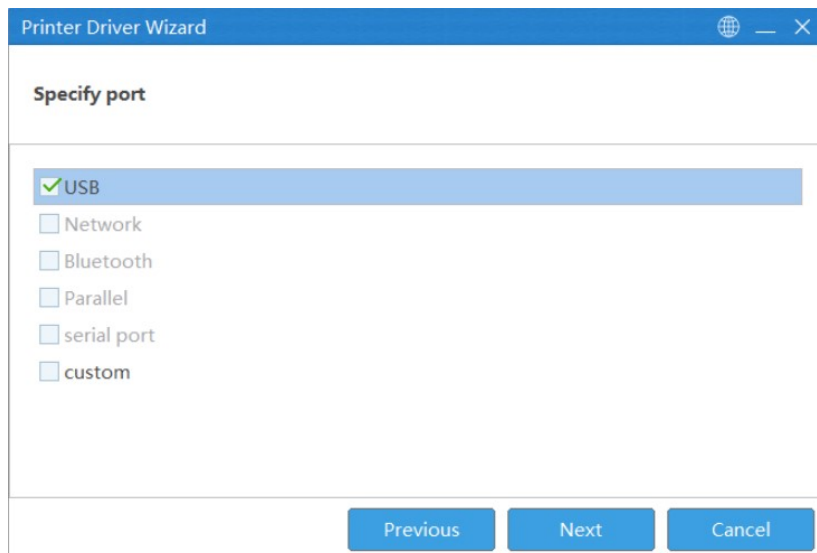
### Instructions:

1. Open the driver file, enter the printer driver wizard, check [PrinterDriver\_PeriPage], choose language English, and click [Next].

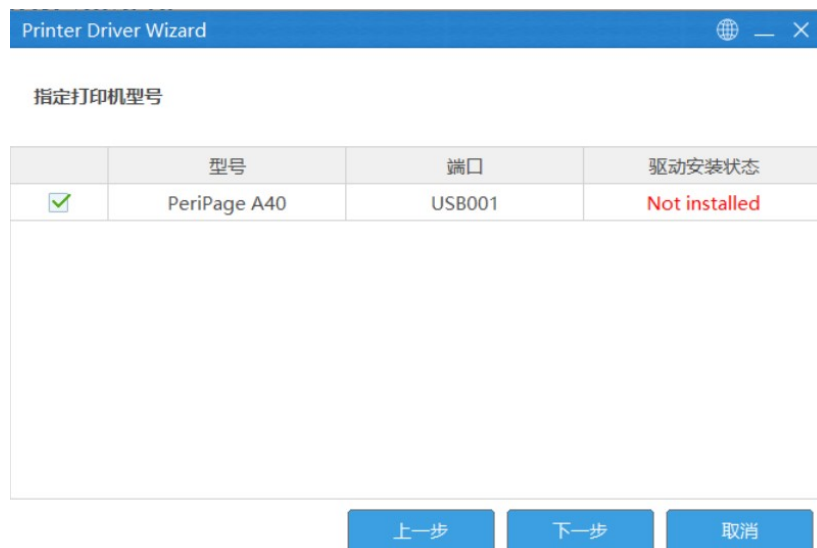


2. Turn on the printer, connect the printer to the computer with the original USB cable, select [USB] for the specified port, and click [Next].

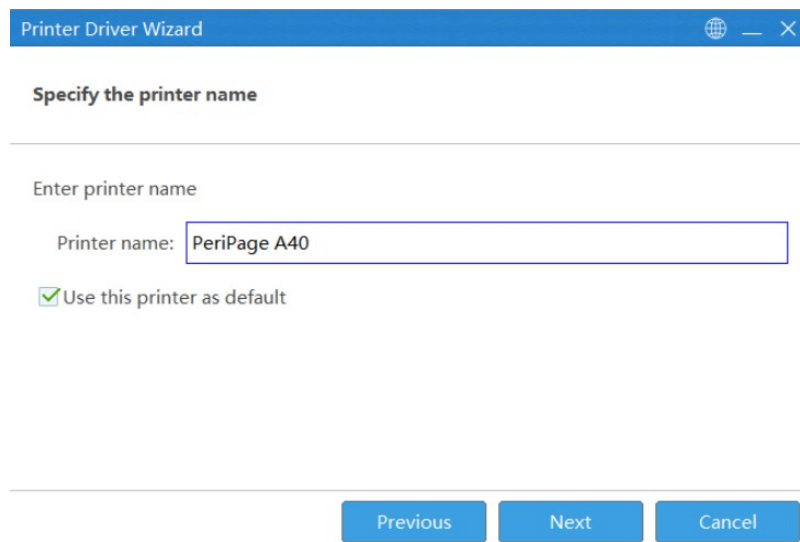
(Note: If it prompts that the printer is not found, please re-plug the printer USB cable, go back to the previous step and click Next again)



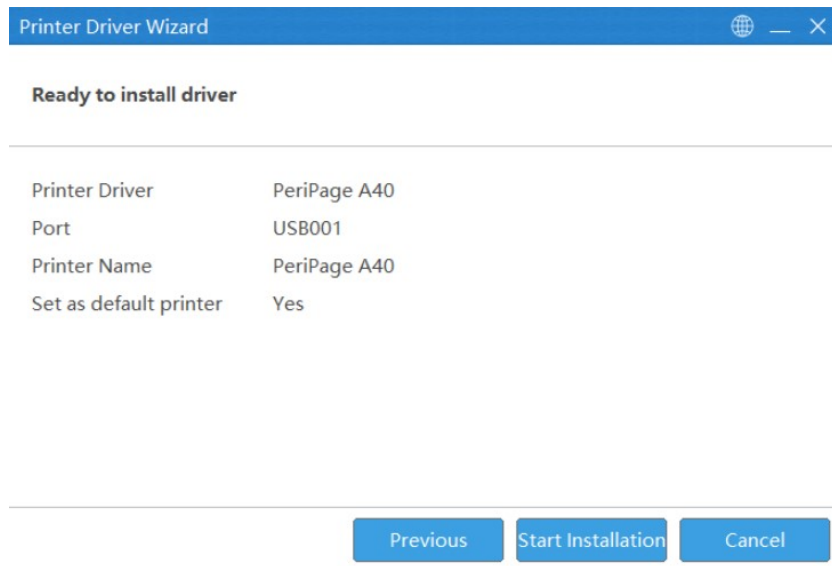
3. Select the printer driver to be installed, confirm that the driver installation status is not installed, and click **[Next]**.



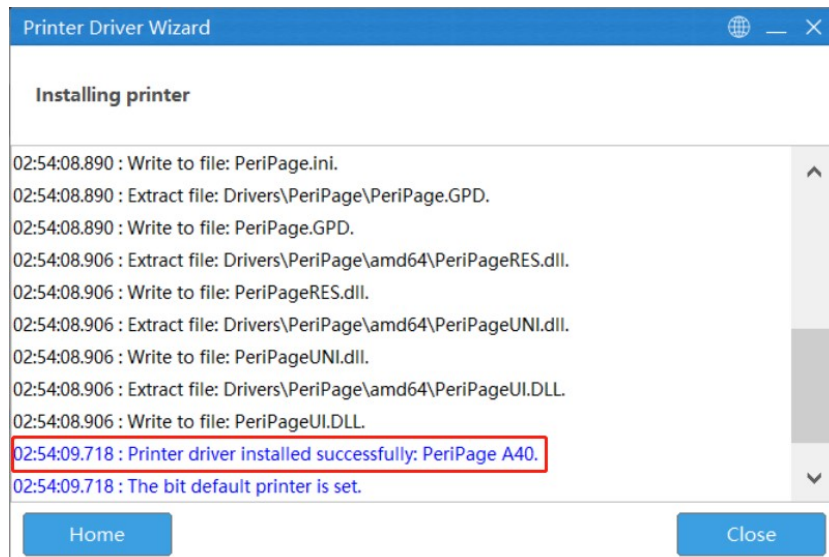
4. Continue to click **[Next]**. You can tick whether to use this printer as the default printer.



5. After confirming that the printer information is correct, click **[Start Installation]**.



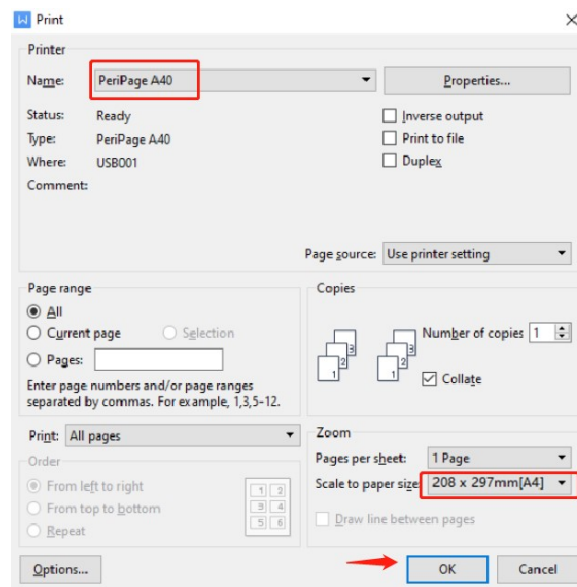
6. Wait for the program to be installed automatically, click **[Close]** in the lower right corner of the driver wizard, and you can go to print normally.



## Document print settings

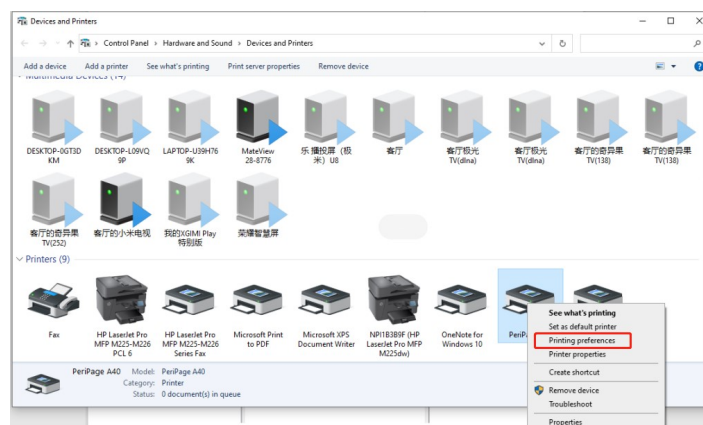
### Instructions :

Open the document to be printed on the computer, and select the printer to print according to the following illustration.

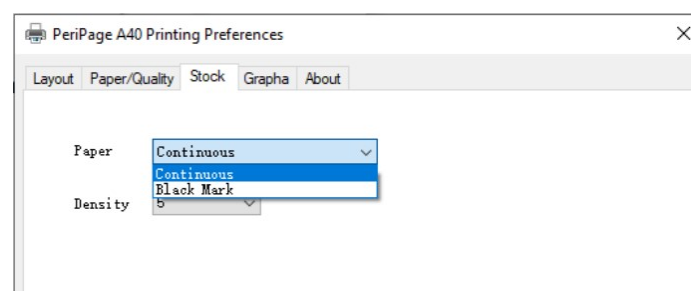


## Other print settings (Recommended to use the default settings)

1. Open the [Devices and Printers] window, select the corresponding printer model, right-click and select Open [Printer Preferences].

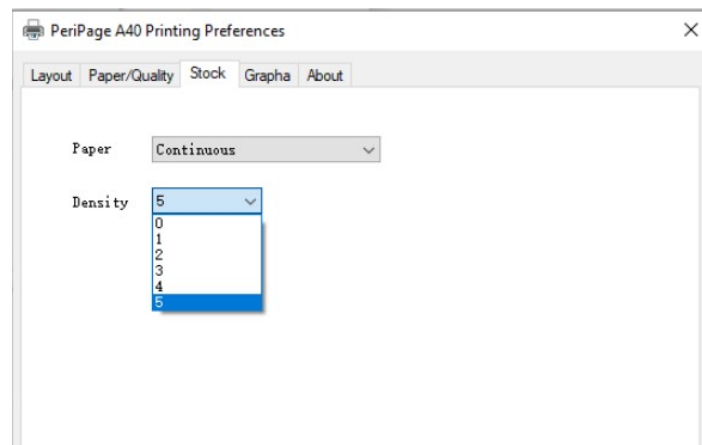


2. Select [Roll], and select the corresponding paper type according to the paper loaded in the printer, as shown in the figure below:



Tips: 1, Continuous paper for roll paper; 2, Black mark paper corresponds to black mark folding paper or black mark roll paper

3. Select the corresponding printing density according to the required printing effect, as shown in the following figure:



4. Click [Graphics], adjust the corresponding brightness and contrast as needed; if the printed content needs to be removed from the background, select the threshold value to adjust and print; select different dithering effects, the printed pictures will have different effects, please make your own according to your needs choose.

